



We, Presentation people, commit to respond to the cry of Earth and to people made poor by embracing the Sustainable Development Goals, providing us a plan of action for living the values of Nano's life. IPA Mission Statement

# Collaboration

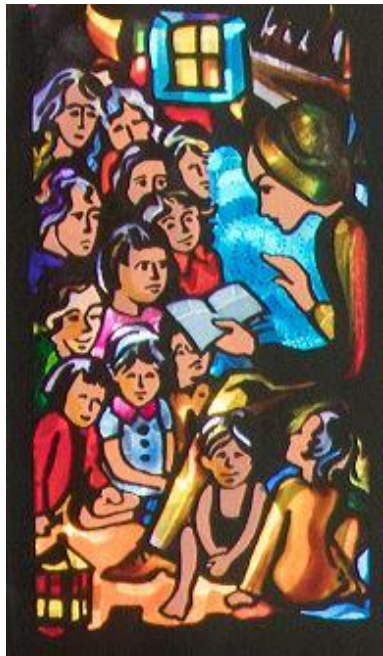
## LAUDATO SI: A CALL TO ECOLOGICAL CONVERSION

### Community Resilience and Empowerment

envisages a synodal journey of community engagement and participatory action at various levels.

[\(Laudato Si Goal 7\)](#)

## 17 PARTNERSHIPS FOR THE GOALS



Nano Nagle Icon Panel.  
Used with permission from  
Nano Nagle Place, Cork, Ireland

### DEEDS: A CALL TO ACTION

- Donate clothes or household goods to a Winter Appeal for those in need.
- Encourage your local community, workplace, or local government structure to implement a sustainability plan.
- Engage in dialogue to better understand the needs of your community – physical, social, psychological and spiritual.
- Offer your support to someone trying to make a positive change in their life.

### WORDS: A CALL TO REFLECT

As Presentation People, it is our prayer that we will continue to work in partnership with one another and our local communities, always maintaining an unwavering focus on the signs of the times in which we find ourselves.

Inspired by the example of Nano Nagle, we seek to accept those who feel unloved, unwanted and rejected by our world and seek to collaborate in solidarity to assist those in need.

**How can you engage in further collaborative action for justice?**

